



MIMARCH.net ARCHITECTS, INC

Architects/ Engineers/ Construction Managers
Interior/Graphic Designers

BREAKING NEWS BULLETIN

Mimar Architects
has a whole new look
please visit us on our new
website at
www.mimarch.net

We are now certified in
Main, New Jersey,
and
Our President
Kal I. Bhatti has his
professional license in
GUAM.

NEWLY AWARDED CONTRACTS

NAVFAC - MID- Lant IDIQ
(\$10M annual fee)

Department of General
Services - IDIQ

Department of Justice -
FBOP IDIQ

**Maryland Stadium
Authority - IDIQ**

MIMARCH
is bringing new and
innovative ideas to
Architecture and Engineering



MIMARCH A.K.A
MIMAR ARCHITECTS, INC

7000 Security Blvd., Suite 320, Baltimore, Maryland 21244
PH: 410-944-4900 FX: 410-944-8044 www.mimarch.net

MINORITY CERTIFICATIONS:



**Disadvantage Business
Enterprise - 8(a) (v)**



**Service Disabled Veteran Owned
Small Business (SDVOSB) (v)**



DBE: MWAA



DBE: WMATA/ DC DOT

MBE/DBE CERTIFICATIONS IN:

**Maryland,
Commonwealth of Virginia,
Pennsylvania,
West Virginia,
Georgia,
Maine,
New Jersey,
Guam**

*and licensed to practice Architecture/
Engineering*



MIMARCH

IS A 17-YEAR OLD ARCHITECTURAL/ENGINEERING/ CONSTRUCTION MNGMNT/ GRAPHIC DESIGN FIRM...

...with a multi-disciplinary design staff of **Construction Managers, Civil/ Structural, Mechanical & Electrical Engineers, Master Planners, Architects, Interior/ Graphic Designers and Facility Assessment/ Building Envelope experts**, well suited to perform the services required for delivering superior, client-focused design. Our team members come from very diverse backgrounds and offer top credentials as graduates of the nation's top schools in research, planning and design management. Our team of professionals collaborate together to bring into reality award-winning buildings with respect for the environment, hi-tech solutions to handle the demands of today's fast-paced technology needs and a creative aesthetic to all projects.

Our team of professionals collaborate together to bring into reality award-winning buildings with respect for the environment, hi-tech solutions to handle the demands of today's fast-paced technology needs and a creative aesthetic to all projects.

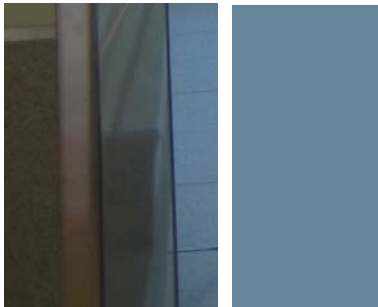
WITH PROVEN CAPABILITIES

MIMARCH's outstanding reputation is a direct result of our commitment to cost-effectiveness, adherence to project schedules and quality project development. More than fifteen National A/E design firms have employed MAI has had a Prime/ Sub relationship with several large A/E firms, continually for last ten years, including some of the top Nations design firms which includes:



Mimarch has successfully completed hundreds of projects that have focused on modifications, renovations and new construction of numerous federal and public facilities. This comprehensive work has included the utilization of each of our multi-discipline areas of expertise. In addition to having the proper credentials and a cohesive staff that perpetuates a forward-thinking environment, we are passionate about the design of our projects and are fully committed to any projects that we undertake.

SOME OF OUR MAJOR FEDERAL AND PUBLIC CLIENTS INCLUDES:



SEE WHAT OUR PRESTEGIOUS CLIENTS HAVE TO SAY ABOUT OUR EXCEPTIONAL SERVICES...

TESTIMONIALS

Jeff Lohr of PB America says...

“... Mimar Architects, Inc., (MIMARCH) is one of the best MBE companies that I have worked with and would be very deserving of receiving a top 100 minority businesses award.”

“... They have been, and continue to be, a valued member of our teams and we will continue, without hesitation, to partner with them on other projects. Of all of the MBE firms that I have worked with, I place Mimar Architects, Inc., (MIMARCH) at the top of the list because of their dedication, flexibility, attention to detail, and reliability.”

“... As far as MBE subs go, they are one of the best. Their work is good, they meet schedules and more importantly they are always willing to work and not sitting with their hands out asking for extras...”

Gary Hardman of EA Engineering, Science and Technology stated...

“...Your organization is first rate. I mentioned the quality of your organization in a meeting with our Chief Engineer, COO, and Vice President...”

William Atkins of VA Medical Center wrote...

“...Facilities and Engineering Services would not hesitate to recommend Mimar Architects, Inc. for future projects at the VA Medical Center, Perry Point.”

James B. Gardiner of Gardiner & Gardiner wrote...

“...It was a pleasurable experience that we wish to repeat. Mr. Bhatti and his team did a fantastic job on the design. The contract documents were well coordinated and led to a minimal RFIs ..., If you are choosing an Architect to design your next project, we would highly recommend Kal and the Mimar team.”

For our work with Gardiner on the Prince George’s County Animal Services Facility...

“There were also minimal changes...less than .1% of the project! The Project also finished two (2) months ahead of schedule

The Mimarch’s team has been referred to as the **“New York Yankees of Baseball”** for Architecture/Engineering by one of our federal clients during an interview.

AWARDS

Top 100 Mid-Atlantic MBE Award

Selected by ‘Greater Baltimore Committee’ for small business leadership Initiative

The top Minority Businesses in Baltimore Area # 31 BBJ

The top 50 Fastest Growing Businesses in Baltimore, CEO Magazine 2006 #11

Fastest Growing Small Business in Baltimore Metro Area, BBJ 2006

WHAT WE DO

MIMAR ARCHITECTS, INC

ARCHITECTURE

AVIATION DESIGN HEALTH CARE DESIGN
FEASIBILITY STUDIES FACILITY ASSESSMENT
BUILDING ENVELOPE
HISTORIC PRESERVATION PROGRAMMING

ENGINEERING

MECHANICAL ELECTRICAL
CIVIL
STRUCTURAL



RETAIL



MARINE



HEALTH CARE



DEPARTMENT OF DEFENSE



CIVIC



AVIATION



MIXED-USE



TRANSPORTATION



EDUCATION



TRANSIT



COMMUNITY CENTER



OFFICE

GRAPHICS

PLANNING

MASTER PLANNING
SPACE PLANNING

CONSTRUCTION MANAGEMENT

DESIGN/ BUILD

INTERIOR DESIGN

PHILOSOPHY

MIMAR ARCHITECTS, INC

AS AN ARCHITECTURAL FIRM FOCUSED ON DESIGNING FOR PUBLIC, INSTITUTIONAL AND CORPORATE CLIENTS...



Mimarch is committed to an interactive design process. This process embraces diversity and builds consensus with our clients focusing on a mutual project vision. We are also committed to an architectural outcome that will enhance and stimulate the environment to fore- last the demands of tomorrow's technology. Mimarch fulfills the needs of our clients by maintaining the leading edge.

FOUNDING GOALS

Mimarch was established with a founding goal to serve multicultural, multi-ethnic clientele in both the U.S. and abroad providing architectural services responding to a broad demographic need, with or while maintaining regional context and cultural identification.

QUALITY
DESIGN ON
DESIGN TIME AND
WITHIN BUDGET...

MOVING FORWARD...

MIMAR ARCHITECTS, INC

MIMARCH takes pride in meeting the growing demands of our progressive culture, by furthering to expand our knowledge and design techniques for a multitude of transportation modes. Modern urbanism has begun a strong shift into a more efficient, commuter friendly environment, improving both affordability and convenience.



TRANSPORTATION/AVIATION EXPERIENCE

- MTA - Redline Corridor, Baltimore City/County
- MTA - Corridor Cities Transit Way (CCT)
- WMATA - DC Orange/ Blue Line
- Federal Transit Administration - Silver Spring Transit Center
- Maryland Port Authority - Baltimore Cruise Ship Terminal
- Traffic Response Information Center, PG County, MD
- Dulles Corridor Metro Project
- MPA - Baltimore Port Cargo Shed
- SHA Office of Maintenance Statewide On-Call A/E svcs
- On-Call Engineering Services - MTA
- MdTA - Quarantine Road Interchange Scale House
- MdTA- Police Building
- Hanover Bridge Historic Towers
- BWI Curbside Expansion And Skywalks
- BWI - Southwest Airline Concourse Retail Concessions
- BWI - Mac Office Building/Warehouse
- BWI Main Terminal Renovations
- BWI Hourly Garage
- BWI Bus Maintenance Facility
- BWI Customer Service Building
- AB Terminal Triturator Building
- BWI-South Terminal Baggage Service Offices
- United Delta, NW, Continental, Southwest Airlines



Mimarch has performed on numerous projects for several transportation agencies:

MARYLAND DEPARTMENT OF TRANSPORTATION

MARYLAND AVIATION ADMINISTRATION
MARYLAND TRANSIT ADMINISTRATION

MARYLAND TRANSPORTATION AUTHORITY
MARYLAND PORT ADMINISTRATION

STATE HIGHWAY ADMINISTRATION

FEDERAL TRANSIT ADMINISTRATION

PG COUNTY DEPARTMENT OF TRANSPORTATION

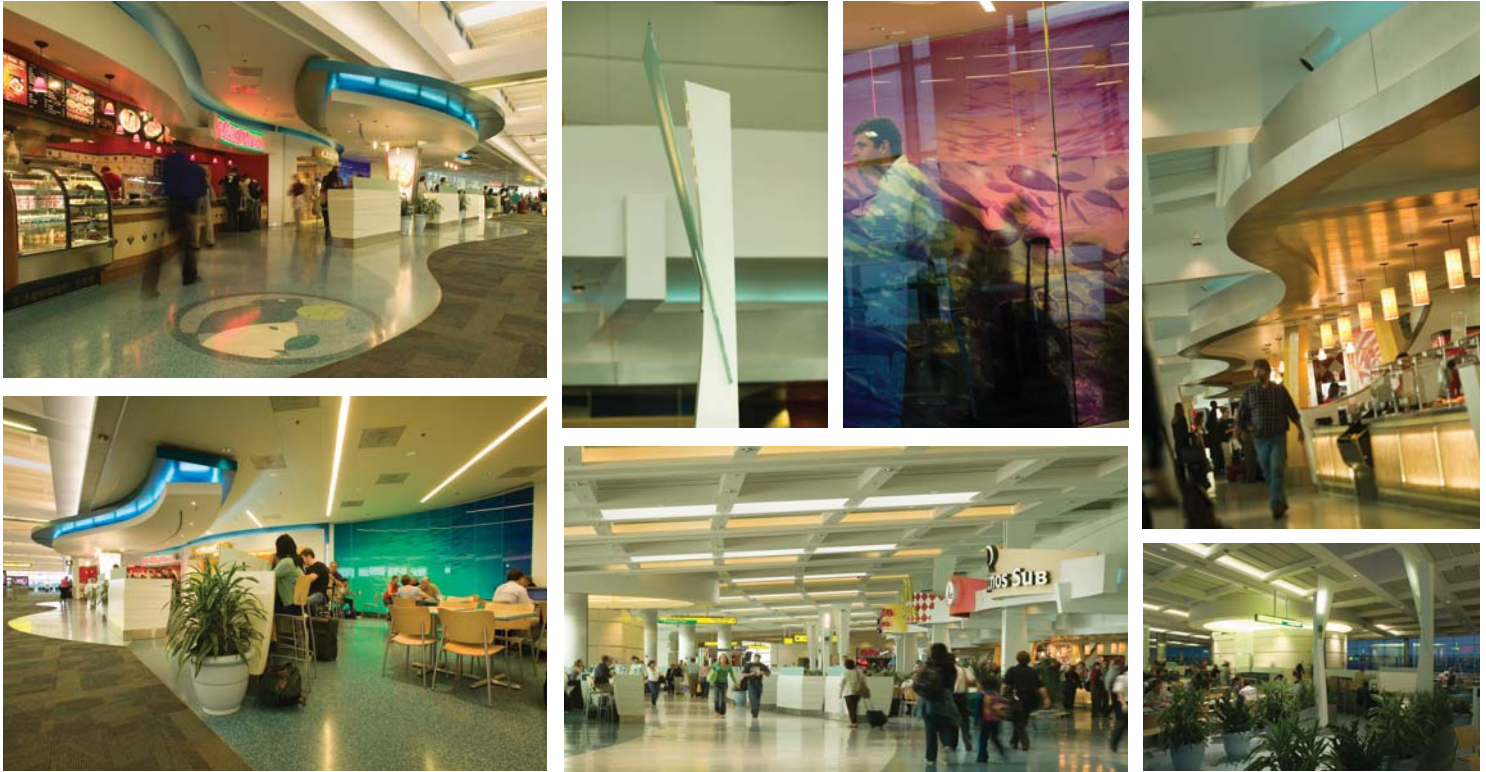
PENNSYLVANIA DEPARTMENT OF TRANSPORTATION

SELECTED PROJECT

MIMAR ARCHITECTS, INC

Mimarch partnered with RTKL Associates developed design and specifications for 140,000 square feet of new and redeveloped retail and concession space, including six new food courts.

BALTIMORE WASHINGTON INTERNATIONAL AIRPORT – SOUTH WEST AIRLINE CONCOURSE RETAIL CONCESSION



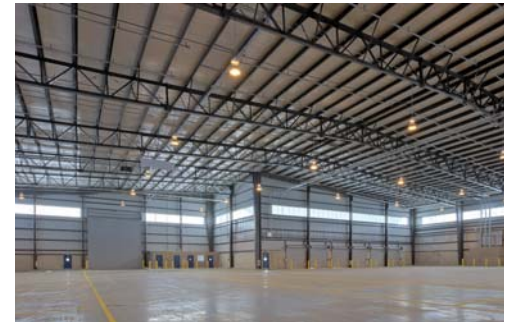
Project included the designing and planning of Concourses A/B Food Court; Mini Food Courts for the Concourses A, B, C, D and B/C/D Landside Terminal; and Retail Space for the existing B,C,D,E and B/C/D Landside Terminal.

SELECTED PROJECT

MIMAR ARCHITECTS, INC

The project consisted of providing architectural design services for a 215,000 SF pre-engineered industrial facility, from Schematic Design to Design Development and Construction Documents. The project met ADA, AT/FP, and life safety requirements.

MARYLAND PORT CARGO SHED - MARYLAND DEPARTMENT OF TRANSPORTATION



Mimarch provided architectural and engineering design, and consulting services including engineering studies, assessment of existing conditions, feasibility studies, reports, design and planning, architecture, MEP, civil, and structural design services. Services included field investigation and survey on the site, produced extensive details of numerous doors, stairs and docks in order to accommodate the sloping floors, Cost estimates and specifications.

SELECTED PROJECT

MIMAR ARCHITECTS, INC

Mimarch partnered with Zimmer Gunsul Frasca Partnership, a Washington, D.C., based architecture and planning firm and Parsons Brinkerhoff of Baltimore for designing and planning of the Silver Spring Transit Center. Project included a Transit facility for Metro station, buses, retail and three hi-rise buildings with six public levels.

SILVER SPRING TRANSIT CENTER, Silver Spring, MD



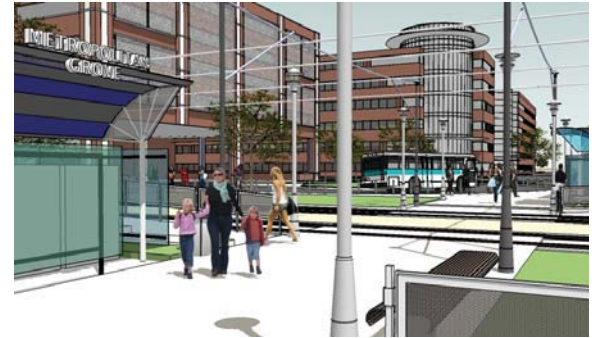
This \$200 million development will also include 200,000 to 250,000 SF of office spaces, a hotel with approximately 700 rooms, residential and retail space which will be built above and around a transit hub that will bring together several modes of transportation - Metro buses and subway and MARC trains. Commercial and residential structures will be built in tiers over and around the transit center, and retail space which will be located on the lower levels of those buildings along with a restaurant.

SELECTED PROJECT

MIMAR ARCHITECTS, INC

Metropolitan Grove Station is one of the 13 stations which currently consist of MARC station and new mixed-use development on the north side of Transit.

CORRIDOR CITIES TRANSIT WAY (CCT) - METROPOLITAN GROVE STATION MARYLAND TRANSIT ADMINISTRATION



The Corridor Cities Transit way (CCT) is a visioning transit study of 14-16 miles in Montgomery County, MD which connects Shady Grove Metro Station to German town along the I-270 Corridor. This Multi Model Corridor Study consist of 13 stations and parallel bike path along the alignment. In this project, both Light Rail Transit (LRT) and Bus Rapid Transit (BRT) options have been studied.

SELECTED PROJECT

MIMAR ARCHITECTS, INC

A new 50,000 square foot Consolidated Car Rental Facility and one of the first in the U.S. to utilize an innovative “mall” approach to car rental. Mimarch assisted Michael Baker in developing the design and production of the construction documents. Additional supporting structures include: A 6,000 – space parking garage, maintenance facilities and a car wash.

CUSTOMER SERVICE BUILDING - BWI AIRPORT, LINTHICUM, MARYLAND



MIMARCH/ Baker planned and designed The Customer Service Building is a 50,000 SF, sized for 2020, with central atrium for one stop shuttle. Rental car counters distributed “radially” around the lobby in a mini-mall” concept for parity. The project creates a multi-agency Customer Service Building that affords parity between the respective agencies with regard to customer service and convenience. The primary design concept building efficiency and customer-friendliness; efficiency of travel and maximizing comfort from the passenger loading zones to the customer agency service space to the ready/return.

SELECTED PROJECT

MIMAR ARCHITECTS, INC

Mimarch as architect of the record provided architectural design services for the conversion of a warehouse into a Cruise Ship Terminal located in Baltimore Maryland as a Joint Venture with STV-NY. Scope of services included construction documents, and specifications, and coordination with the owner/users and consultants.

CRUISE SHIP TERMINAL - BALTIMORE, MD DEPARTMENT OF TRANSPORTATION - MARYLAND PORT AUTHORITY



This project involved a multi-faceted hands-on coordination with the Maryland Port Administration and the Baltimore office of STV as well as their New York offices and numerous other consultants. Numerous designs were prepared to satisfy Maryland Port Administration operations, marketing department and cruise lines.

Upon completion of schematic design, numerous coordination meetings were held with the fire safety consultant and fire Marshall to retrofit the sprinkler Design. Since the renovated space was designed for the terminal interiors, very moderate finishes were used without losing the required ambience of space.

"BRINGING COMPATIBLE LAND USES AND PEOPLE CLOSER TOGETHER"

MIMAR ARCHITECTS, INC

Mimarch's design strategies and model ordinances for implementing Smart Development in commercial and mixed use areas means that buildings, parking areas, streets, driveways, and public spaces are developed in a way that shortens trips to lessens dependence on the automobile, thereby reducing levels of land consumption, energy use, and air pollution. Pedestrian-oriented developments require an approach to site planning that will create comfortable public spaces where people have the opportunity to interact, shop, and relax.



MIXED-USE DEVELOPMENT EXPERIENCE

- Suitland Manor Development, Prince George's County
- Silver Spring Transit Center
- Gateway Arts District, Prince George's County, MD
- Maryland Transit Administration - Corridor Cities Transit Way
- Beechcrest Development
- North Charles Street



SELECTED PROJECT

MIMAR ARCHITECTS, INC

Mimarch was commissioned to provide master planning concept themes for this major redevelopment project. Suitland Manor, located just minutes from the Nation's Capital is within easy walking distance of the busy Suitland Metro-rail station and borders the 226-acre Suitland Federal Center, where 9000 federal employees currently work and another 2000 professionals are coming by 2010.

SUITLAND MANOR DEVELOPMENT - Prince George's County, MD



The plan for Suitland community outlines the vision for a 33-acre redevelopment project, which includes the entirety of the proposed 22-acre Suitland Manor project site. A mixed-use, urban town center, where a combination of new offices, retail and entertainment venues will be developed concurrently with a mix of housing will form a lively, pedestrian-friendly neighborhood.

SELECTED PROJECT

MIMAR ARCHITECTS, INC

MIMARCH WAS ASSIGNED TO SELECT THREE MODEL SITES AND DEVELOP PORTRAYAL DESIGNS FOR EACH. MIMARCH PROVIDED A COMPREHENSIVE REVIEW AND INVESTIGATION OF THE SITE(S), STUDIED EXISTING AND PROPOSED ZONING/PLANNING ISSUES, PREPARED FEASIBILITY STUDIES, MADE DESIGN RECOMMENDATIONS, AND DEVELOPED PRELIMINARY PROGRAMMING AND MASTER PLANNING.

GATEWAY ARTS DISTRICT - REDEVELOPMENT AUTHORITY, PRINCE GEORGE'S COUNTY



The project was developed as a presentation/initiative to encourage redevelopment of the entire Gateway Arts District and for Prince George's County officials to receive approval and funding. As a result of MAI's successful design and planning efforts being so well received, The Redevelopment Authority of Prince George's County have posted our concept renderings in the main entrance of their headquarter offices and added the web-based presentation to their official website.

SELECTED PROJECT

MIMAR ARCHITECTS, INC

MIMARCH'S DESIGN TEAM ANALYZED THE EXISTING SITE CONDITIONS, CONDUCTED EXTENSIVE SURVEYS, AND PRODUCED NUMEROUS REPORTS FOR THE CLIENT IN ORDER TO PROVIDE SUFFICIENT INFORMATION TO EVALUATE THE PROPOSED DEVELOPMENT OF THE PROPERTY. MAI ALSO PRESENTED THEIR TWO DESIGN ALTERNATIVES (OPTIONS #1 AND #2) TO PUBLIC OFFICIALS FROM HOWARD COUNTY.

BEECHCREST DEVELOPMENT - GARDEN APARTMENTS



MIMARCH PROVIDED PROFESSIONAL ARCHITECTURAL/ENGINEERING DESIGN SERVICES FOR PRELIMINARY PLANNING THROUGH CONSTRUCTION DOCUMENTS FOR THE DEVELOPMENT OF THE BEECHCREST RESIDENTIAL COMMUNITY. PROJECT SERVICES INCLUDED PROGRAMMING, SCHEMATIC DESIGN, DESIGN DEVELOPMENT, PREPARATION OF DRAWINGS AND SPECIFICATIONS AND MASTER PLANNING FOR THE ENTIRE SITE. MIMARCH'S SCOPE OF SERVICES ALSO INCLUDED DEVELOPMENT OF THE PRELIMINARY SITE LAYOUTS/ALTERNATIVES CONSISTING OF TOWN HOMES (OPTION #1) AND GARDEN STYLE APARTMENTS (OPTION #2) AS WELL AS ALL DRIVEWAYS, ROADS, SIDEWALKS, PERIMETER PATHWAYS, PLAY AREAS, OUTDOOR RECREATION AND REQUIRED PARKING.

FEDERAL, STATE AND LOCAL GOVERNMENT AGENCIES

MIMAR ARCHITECTS, INC

MIMARCH has performed services for the following Federal/Government Agencies:



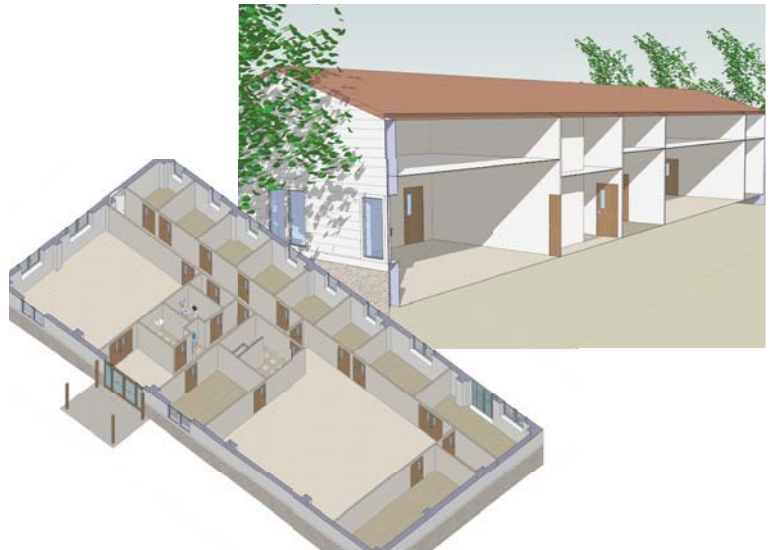
- Federal Law Enforcement Training Center
- Federal Communication Center
- United States Coast Guard
- Department of General Services
- Department of Veterans Affairs
- Department of Treasury State
- Department of Homeland Security
- Naval Facility (NAVFAC) - Mid-Atlantic Region
- Department of Justice-Federal Bureau of Prisons
- University of Maryland College Park
- M-NCPPC Parks & Recreation
- Maryland Stadium Authority
- Baltimore City Department of Public Works
- Baltimore City Public Schools
- Harlem Park Revitalization Corporation
- Best Western Convention Hotel
- Historic East Baltimore Community Action Coalition
- Historic Annapolis Foundation
- Oliver Economic Community Development Corporation
- Clifton T. Perkins Hospital
- Eastern Shore Reg. Microbiology Laboratories
- Charles Hickey School
- Casa of Maryland
- Center for Social Change
- University of Maryland Medical System
- MD State Archives
- District Court of MD
- Maryland State Highway Administration
- Maryland Aviation Administration
- Department of Health and Mental Hygiene
- Prince George's County Redevelopment Authority
- Prince George's County Public Works
- Prince George's County Housing Authority
- PG County Dptmnt. of Environmental Resources
- Johns Hopkins Medical Services Corporation
- Housing Opportunity Commission of Montgomery County
- MD - National Capital Park & Planning Commission
- DC Parks & Recreation

SELECTED PROJECT

MIMAR ARCHITECTS, INC

MAI provided Architectural and interior design, structural, mechanical, electrical and fire protection design services for replacing High Frequency Direction Finding Center with new 5000 SF construction modular building. Project consisted of: Conference Room, Operations Center, Offices, Break Room, Workshop Room and Computer services Room.

FEDERAL COMMUNICATION CENTER MONITORING STATION - HIGH FREQUENCY DIRECTION FINDING CENTER



The scope of design services under this contract includes complete design services including mechanical, electrical, plumbing, fire protection, elevator work, survey reports, systems evaluations, life safety, interior security, code compliance, the preparation of feasibility studies, site investigation, cost estimating, procurement support, post construction award services, monitoring of construction as required, and other related supplemental services requested by the Government.

SELECTED PROJECT

MIMAR ARCHITECTS, INC

MIMARCH as architect of record provided Architecture and interior design services for the new \$2.75M FLETC - Multi-purpose Auditorium. Scope of services contract included, review and evaluation of previously prepared Design Development Documents and redesign as necessary. MAI found and corrected problems with the original design.

FEDERAL LAW ENFORCEMENT TRAINING CENTER - U.S. DEPARTMENT OF HOMELAND SECURITY



MULTI-PURPOSE AUDITORIUM BUILDING #64, CHELTENHAM, MD

MIMARCH prepared interior design, furnishing layout, design development, construction documents, technical specifications and product data for furnishings. Project scope included Georgian Style Architecture approximately 10,000 SF building for multi-functional activities. Building included auditorium for 250 seats with divisible partitions and stage; large breakout room and food serving area. Mimarch scope of services contract included, review and evaluation of previously prepared Design Development Documents and redesign as necessary. MAI found and corrected problems with the original design.

SELECTED PROJECT

MIMAR ARCHITECTS, INC

Mimarch as Prime Consultant provided full Architectural/ Engineering Services throughout the process for the design of 40,000 Square Foot new Animal services facility for Prince George's County, Maryland. Building was selected for model green building by The Department of Environmental Resources, Prince George's County.

ANIMAL SERVICES FACILITY – PRINCE GEORGE'S COUNTY, MD.



CIVIC, COMMUNITY PRIDE

This building includes: a spay/neuter clinic, receiving area, kennel area, and administrative area complete with large community room that will be used for conducting educational programs and public meetings. The design involved features such as energy conservation, maximum use of natural light. We were involved in all phases of design which included separate cat and dog facilities with separate admission, multiple adoption rooms, laboratories, surgery rooms, indoor and outdoor exercise areas as well as kitten and puppy nurseries. Efforts were made to separate cats and dogs by sound and sight to reduce stress. Key components of design: Security, Safety, Acoustics (overall noise), Drainage, Germ and Disease Control, Ventilation systems, and Plumbing were taken into highest consideration.

It's AN HONOR TO WORK CLOSELY WITH THE GROWING DEMANDS OF AN URBAN ENVIRONMENT, SATISFYING THE NEEDS OF OVERWHELMED SPACES WITH THE UNIQUE INTERACTIONS OF ALL AGES AND EXPERTISE.



Healthcare Experience

- VETERANS ADMINISTRATION – VARIOUS TASKS VA MARYLAND HEALTH CARE SYSTEM – PERRY POINT
- JOHN HOPKINS MEDICAL SERVICE CORP./ EAST BALTIMORE MEDICAL CENTER, BALTIMORE, MARYLAND
- EASTERN SHORE REGION MICROBIOLOGY LABORATORIES, SALISBURY, MD - DEPARTMENT OF HEALTH AND MENTAL HYGIENE, DEPARTMENT OF GENERAL SERVICES, MARYLAND
- UNIVERSITY OF MARYLAND, MEDICAL SYSTEM, SHOCK TRAUMA CENTER & AUTOPSY AREA
- UNIVERSITY OF MARYLAND, MEDICAL SYSTEM, PATHOLOGY LAB BALTIMORE, MD
- ANIMAL SERVICES FACILITY, PRINCE GEORGE'S COUNTY, MARYLAND
- DYER REGIONAL HEALTH CLINIC, BALTIMORE, MARYLAND
- SPRINGFIELD PSYCHIATRIC HOSPITAL, BALTIMORE, MARYLAND - DEPARTMENT OF HEALTH AND MENTAL HYGIENE, DEPARTMENT OF GENERAL SERVICES, MARYLAND
- CLIFTON T. PERKINS HOSPITAL, BALTIMORE, MARYLAND - DEPARTMENT OF HEALTH AND MENTAL HYGIENE, DEPARTMENT OF GENERAL SERVICES, MARYLAND

MIMARCH TAKES PRIDE IN ASSISTING THE DESIGN AND DEVELOPMENT OF A VARIETY OF PUBLIC SPACES. THE UNIQUE CONNECTION OF ARCHITECTURE AND THE PERSONAL EXPERIENCE OF EACH INDIVIDUAL THAT DWELLS WITHIN AND PUSHES THE ENVELOPE OF DESIGN TO NEW LEVELS, AS WE BEGIN TO ASK QUESTIONS ABOUT HOW TO BETTER ENSURE THE PUBLIC'S INTEGRATION WITHIN THESE SPACES. EACH DESIGN RESPONDS TO THE CONTEXT OF THE ATMOSPHERE AND THE ACTIVITIES THAT RESIDES WITHIN AND AROUND THE FORM WORK.

SELECTED PROJECT

MIMAR ARCHITECTS, INC

This project consisted of the complete interior renovation and extensive architectural upgrades to the D. Leonard Regional Dyer Health Center for the Prince George's County Office of Central Services. The 40,000 S.F. facility serves as an adult health clinic and counseling center.

D. Leonard Dyer Regional Health Center, Prince George's County Health Department



Mimarch provided comprehensive architectural and engineering professional services for the major renovations, building repairs and modifications, and interior upgrades – along with the addition of a new reception area and enlarged executive offices. Our scope of services included all phases of design/planning through preparation of bid documents (100% CD's) and construction administration, extensive field/site surveys, building envelope and structural investigative studies, a weatherization survey, documentation and measurements of existing conditions, prepared as-built plans in AutoCAD and created schematic design layouts and preliminary design and construction documents. MAI also reviewed shop drawings, coordinated the cross-disciplinary work of all design team engineers/consultants, responded to RFI's and technical queries, and attended/led six construction progress meetings.

SELECTED PROJECT

MIMAR ARCHITECTS, INC

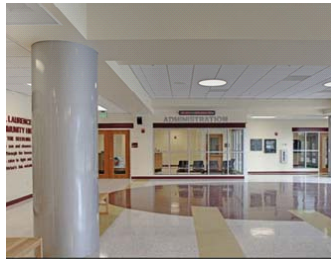
The scope of design services under this contract includes to relocate the Shock Trauma center surgical lounge locker room to the first floor along with some of its administrative offices and to provide direct access to the operating room floor which is located on the second floor directly above. The purpose of this project was to provide a new locker room and surgical lounge with STC support services within an occupied sterile environment.

University of Maryland Medical Center - Shock Trauma Center, Baltimore, MD



The renovation included upgrades to the facility's MEP infrastructure to accommodate future phases on other levels. The construction area was approximately 5000 sf, where the previous Shock Trauma Clinic had been located. One of the tasks associated with this project was to provide a convenience stair from the new surgical lounge to the existing occupied Operating Room Suite, which functions 24 hours per day. The project required multiple site visits with the UMMS Facilities Staff as well as with the end-users. HEPA filters were used while conducting our as-built survey and were also used during the entire construction period. With the building being occupied during construction, MIMAR Architects, Inc. devised an ICRA Plan to ensure that UMMS met the minimum requirements for their upcoming JAHCO accreditation.

MIMARCH takes a strong stance in supporting a higher level of education for the youth of our home city, Baltimore, MD, through the design and construction of well maintained facilities that students may be proud to call their own.



Education Experience

- PAUL LAURANCE DUNBAR HIGHSCHOOL
- NORTHFORESTVILLE ELEMENTARY SCHOOL, NORTHFORESTVILLE, MD
- ISB K-8 PRIVATE SCHOOL/COMMUNITY CENTER
- BALTIMORE CITY PUBLIC SCHOOLS - CIP, ENERGY SAVINGS
- DEERFIELD RUN ELEMENTARY SCHOOL, LAUREL, MD
- CHESAPEAKE SCIENCE POINT PUBLIC CHARTER SCHOOL, HANOVER, MD
- CHARLES HICKEY SCHOOL
- MCC PRIVATE SCHOOL K-8
- BALTIMORE CITY PUBLIC SCHOOLS - CONSTRUCTION MANAGEMENT
- THURGOOD MARSHAL HIGH SCHOOL, BALTIMORE, MD
- COLLINGTON SQUARE SCHOOL
- HAZEL WOOD SCHOOL
- CHARLES CARROLL SCHOOL
- MARRY RODMAN SCHOOL
- BEECH FIELD SCHOOL
- FRANCIS WOODS SCHOOL
- YORK WOOD SCHOOL
- JOHN RUHRAN SCHOOL
- THOMAS JOHNSON BCPS #84
- WALTER P. CARTER ELEMENTARY
- CARTER G. WOODSON
- BENJAMIN FRANKLIN MIDDLE SCHOOL
- HIGHLANDTOWN ELEMENTARY
- HOLABIRD ELEMENTARY
- MONTEBELLO ELEMENTARY

K-12 EDUCATION EXPERIENCE

The educational process, is an on going experience for individuals of all ages, expertise, and professional practices. Spaces created for educational purposes are designed with a sensitivity towards the user, involving issues of light, noise, public versus private spaces, recreational activities, and resources. MIMARCH strongly supports all stages of investigation and design in order to build the best educational standards available.

CHILD CARE
ADMINISTRATION
CONFERENCE/ SEMINAR RMS.
RESEARCH LABS
OFFICE SPACES
FAMILY SERVICE CLINIC



Education Experience

- University of Maryland College Park
- University of Maryland Baltimore County
- University of Maryland School of Public Health
- Johns Hopkins University
- Paul Lurance Dunbar Highschool
- Northforestville Elementary School, Northforestville, MD
- ISB K-8 Private School/Community Center
- Baltimore City Public Schools - CIP, Energy Savings
- Deerfield Run Elementary School, Laurel, MD
- Chesapeake Science Point Charter School, Hanover, MD
- Charles Hickey School
- MCC Private School K-8
- Baltimore City Public Schools - Construction Management
- Thurgood Marshal High School, Baltimore, MD
- Collington Square School
- Hazel Wood School
- Charles Carroll School
- Marry Rodman School
- Beech Field School
- Francis Woods School
- York Wood School
- John Ruhran School
- Thomas Johnson BCPS #84
- Walter P. Carter Elementary
- Carter G. Woodson



HIGHER EDUCATION EXPERIENCE

JOHNS HOPKINS UNIVERSITY
UNIVERSITY OF MARYLAND SCHOOL OF PUBLIC HEALTH
UNIVERSITY OF MARYLAND BALTIMORE COUNTY
UNIVERSITY OF MARYLAND COLLEGE PARK

Residential architecture takes on new forms as MIMARCH works personally with each client, developing programmatic solutions for material studies, circulation, privacy, and lighting within each structure's architectural community.



Residential Experience

- Holly Hall Senior Citizen Center
- Caroline-Eden Street Housing
- Madison Avenue Housing
- Renaissance Place Housing
- Waverly Towers-Elderly Housing, Bethesda, MD
- Rolling Road Senior Housing, Baltimore, MD
- Arcola Towers, Public Housing, Silver Spring
- MAA - Home Owners Assistance Program
- Harlem Park Revitalization Corporation
- 135 Maryland Ave, PG County, MD
- Shadyside Dollar Home, PG County, MD.
- Spencerville Assisted Living
- Somerset Manor Apartments Modernization
- Lombard Street Apartments, Baltimore
- Office Housing - U.S. Coast Guard Yard
- 6904 Jarrette Avenue, PG County
- AMICA International - 42 Apts., DC.
- 14 Townhouses - HEBCAC
- Adopt-A-House: Elderly Housing
- Renaissance Phases I, II, and III- 54 Town homes, HEBCAC, East Baltimore



MIMARCH HAS WORKED FOR SEVERAL HOUSING AUTHORITIES AND OTHER MUNICIPAL HOUSING AGENCIES INCLUDING:

- Housing Authority of Baltimore
- Montgomery County Housing Commission
- Redevelopment Authority of Prince George's County
- Havre De Grace Housing Authority
- Frederick City Housing Authority
- Maryland Housing and Community Development
- Maryland Aviation Administration- Real Estate Division
- Hope IV - Baltimore City
- U.S. Department of Housing and Urban Development (HUD)
- Harlem Park Corporation - Baltimore City
- Historic East Baltimore Community Action Coalition Inc.
- Oliver Economic Development Group - Baltimore City
- Druid Hill Housing Development - Baltimore City
- Beechcrest Development - Elkridge, Maryland

MIMARCH was recently awarded as part of a development team from New York; the Full Architectural and Engineering Services for the rehabilitation of over 144 properties in Upton West. An effort put forth by the Mayor of Baltimore through the Baltimore Development Corporation, Housing Authority of Baltimore City and the MD Development of Housing and Community Development.

SELECTED PROJECT

MIMAR ARCHITECTS, INC

Clay Court and Lestor Morton is a multi-family housing complex consisting of 214 units. Clay Court is comprised of 20 garden-style townhomes and 70 apartment units and Lestor Morton contains 10 garden style townhomes and 114 apartment units. The project was funded by HUD and managed under Maryland DHCD and required the adherence to strict guidelines. MAI had to not only follow HUD regulations for this project, but Federal regulations for accessibility as well.

Clay Court and Lestor Morton Town Houses & Apartments



MAI provided accessibility analysis and solutions for section 504 ADA compliance upgrades and construction administration/project management as a third-party consultant. MAI's services included the review of all shop drawings for compliance, issued change orders, prepared observation reports, conducted periodic construction inspections of materials and workmanship, ensured adherence to all the specifications set forth in the permit set and the construction documents, reviewed payment requisitions for consistency with the construction progress and prepared punch list inspections and meeting minutes.

MAI was also asked to perform third-party construction administration services/inspections for the two new community center buildings, new playground areas and all site amenities including sitting areas and gazebos.

SELECTED PROJECT

MIMAR ARCHITECTS, INC

Poe Homes is located west of downtown Baltimore at the intersection of North Fremont Avenue and West Lexington Street. Construction of the development was completed in 1941. This project consisted of two phases; Phase I included site upgrades for ADA compliance and the design/renovations of the management office. Phase II consisted of ADA modifications of 30 one-bedroom units.

Poe Homes Development, Baltimore City



Phase I

MAI was responsible for performing all ADA Section 504 site upgrades which consisted of the new installation of handicap access routes from the Maintenance Office to the Community Center and an accessible route to the playground, the basketball court and the dumpsters. Scope of services included field investigations of all existing conditions, review of existing drawings, preparation of demolition drawings, new plumbing schematics and construction cost estimates for new a bathroom in Community Center. In addition, electrical work included the relocation of switch boards, and intercom station to ADA height compliance.

Phase II

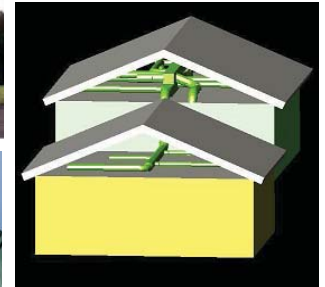
MAI performed architectural/engineering design services to convert 30, one-bedroom units into 15 ADA accessible two-bedroom apartments. In addition, MAI examined several other units, which HABC suggested, for cost effectiveness of interior modifications and site work. MAI submitted its recommendations to HABC for approval and 21 units were modified based on three prototypical designs.

THINKING GREEN...

... dedicated to making the places we design sustainable, so they are safe and healthy for our clients in the present and future, conserve resources for future generations and provide economic returns throughout the extended life of the project.

Qualifications:

- In-House LEED AP Professionals
- BIM technology
- Engaged in green building and energy systems
- High standards and expectations in sustainable design
- Selects the best, most cost effective insulation, window systems, HVAC systems, domestic water heating, lighting and power distribution systems.



SUSTAINABLE DESIGN
SUSTAINABLE DESIGN
ECO-FRIENDLY MATERIALS
BIM TECHNOLOGY
BIM TECHNOLOGY
RECYCLE AND REUSE MATERIALS
LEED AP PERSONNEL
LEED AP PERSONNEL
ENERGY EFFICIENCY
ENERGY EFFICIENCY